



Madeira 21 Southlands, Green Road, St Clement, Jersey, JE2 6QA
£650,000

21 Southlands, St Clement, JE2 6QA

A charming 3-bedroom home by the sea at Havre Des Pas

Just a stone's throw from the beachfront, this substantial three-bedroom home offers the perfect blend of space, location, and potential. Ideally positioned in this seaside community, you'll enjoy easy access to local amenities and the relaxed charm of life by the beach. Inside, the property boasts generous reception areas, ideal for entertaining or relaxing with family, while externally you'll find both front and rear gardens offering plenty of space to enjoy the sea air. A good-sized garden, along with the added benefit of a garage plus parking, makes this an attractive option for growing families.

While some areas would benefit from a touch of modernisation, this home is full of promise and ready for someone to make it their own.

Services

Double glazing
Electric heating
Gas bottle for the cooker only

ANTI MONEY LAUNDERING REGULATION

Once an offer is accepted and negotiations for the purchase of a property are entered into, the prospective purchasers will be asked to produce photographic identification (passport or driving licence) and proof of residency documentation eg, a current utility bill together with confirmation of source of funds. This is in order for us to comply with the current Money Laundering Legislation

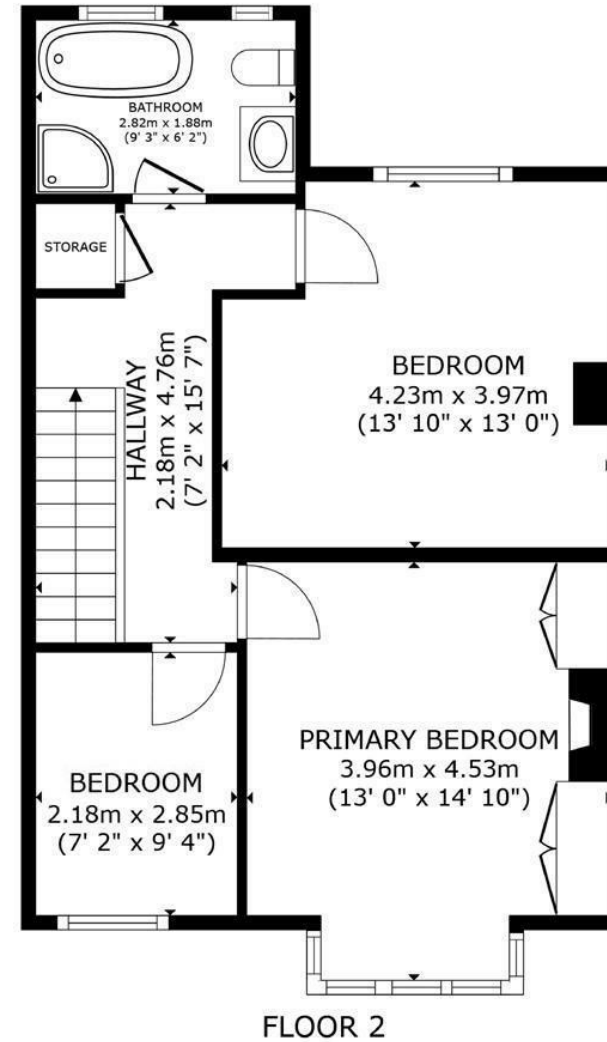
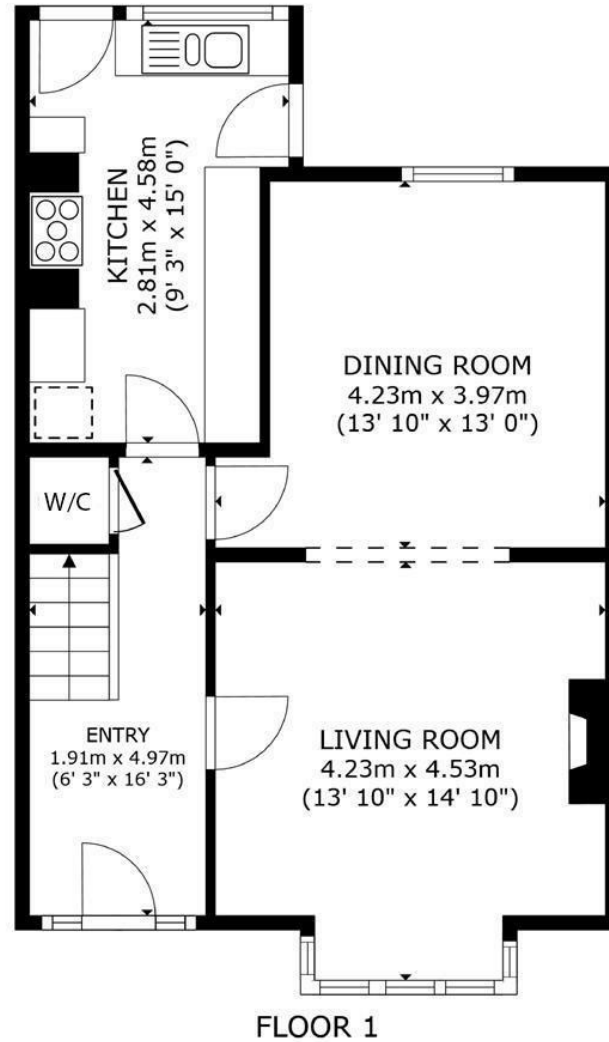
DISCLAIMER

Please note that Slomans Estate Agents we have prepared these particulars as a general guide only. We have not carried out a detailed survey, nor tested the services, appliances and specified fittings. These particulars are supplied on the understanding that all negotiations are conducted through Slomans Estate Agents. Their accuracy is not guaranteed nor do they form part of any contract.

FREE VALUATION

Would you like to know what your own home is worth?
If you would like a free verbal valuation please do not hesitate to contact us on 87 97 87





GROSS INTERNAL AREA
 FLOOR 1 56.0 m² (602 sq.ft.) FLOOR 2 56.0 m² (602 sq.ft.)
 TOTAL : 111.9 m² (1,205 sq.ft.)
 SIZES AND DIMENSIONS ARE APPROXIMATE, ACTUAL MAY VARY.

